

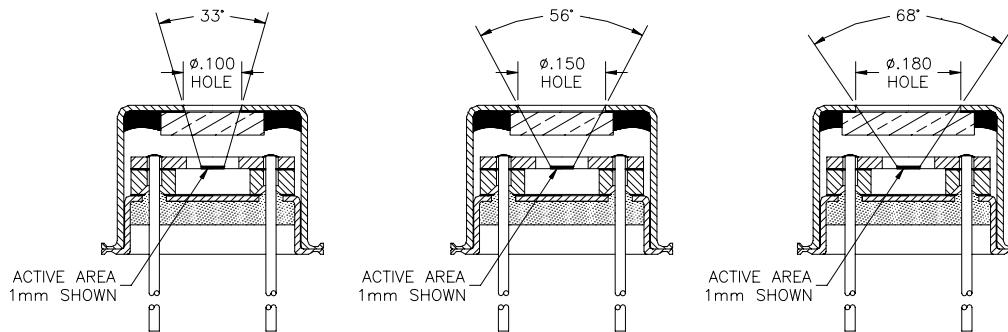


## Package Hole Size and Aperture Options

Dexter Research offers a wide variety of package hole sizes and internal apertures which can be used to modify the Field of View (FOV) of single element detectors or minimize cross talk in multi-channel detectors. FOV is determined by a straight line ray trace from the edge of the active area of the detector to the edge of the hole/aperture opening.

### Package Hole Size

Package hole size can be customized to modify detector Field of View (FOV) of TO-5 packages. Hole size also defines the amount of energy coming into the package and subsequently falling on the detector active area. Package (cover) hole sizes available (inches): .100", .125", .150", .180", .202" dia.



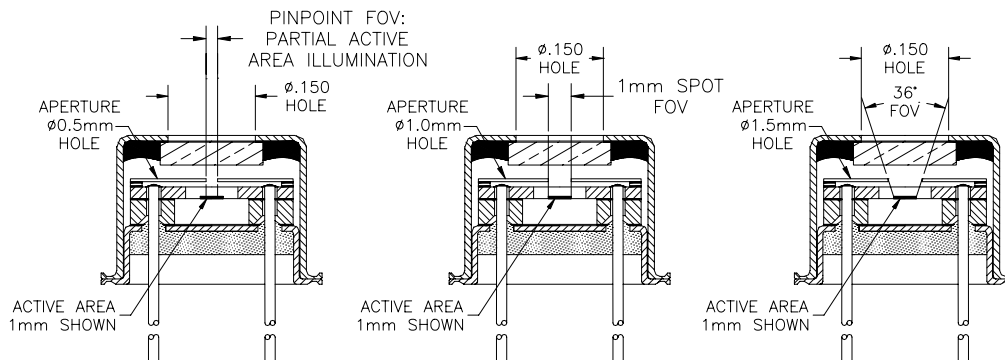
FOV effects of cover hole size on single element detector (model 1M used for example).

### Internal Aperture

Internal apertures can be used to modify the FOV of our single element detectors in TO-5 packages.

Internal aperture sizes available (mm): .25mm, .5mm, .6mm, .75mm, 1.0mm, 1.5mm, 2mm dia.

Internal apertures for limiting cross talk in multi-element detectors are available for the following models: DR34, TM34, T34, DR46, 2M Quad, 10 channel. The aperture hole sizes are generally the same size as the detector active area.



FOV effects of internal aperture on single element detector (model 1M used for example).